

Anti-Trop2 hlgG1 Reference Antibody (Sacbio)

Product Information

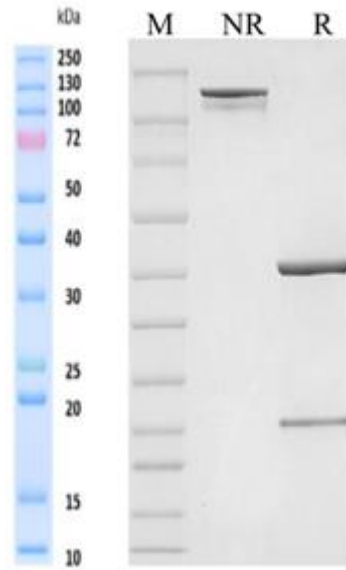
Product Name	Anti-Trop2 hlgG1 Reference Antibody (Sacbio)
Storage temp.	Store at 2-8°C short term (1-2 weeks).Store at $\leq -20^{\circ}\text{C}$ long term. Avoid repeated freeze-thaw.
Catalog# / Size	GM-87499MAB-1mg / 1 mg GM-87499MAB-5mg / 5 mg GM-87499MAB-25mg / 25 mg GM-87499MAB-50mg / 50 mg GM-87499MAB-100mg / 100 mg

Antibody Information

Expression System	CHO
Aggregation	< 5% as determined by SEC-HPLC
Purity	> 95% as determined by SDS-PAGE
Endotoxin	< 1 EU/mg, determined by LAL gel clotting assay
Sterility	0.2 μm Filtered
Target	Trop2
Clone	Sacituzumab
Alternative Names	EGP-1, EGP1, GA733-1, GA7331, GP50, M1S1, TACSTD2
Source/Isotype	Monoclonal human IgG1(REEM),kappa
Application	/
Description	TROP2 is a carcinoma-associated antigen defined by the monoclonal antibody GA733. This antigen is a member of a family including at least two type I membrane proteins. It transduces an intracellular calcium signal and acts as a cell surface receptor. Mutations of this gene result in gelatinous drop-like corneal dystrophy, an autosomal recessive disorder characterized by severe corneal amyloidosis leading to blindness.
Formulation	phosphate-buffered solution, pH 7.4.

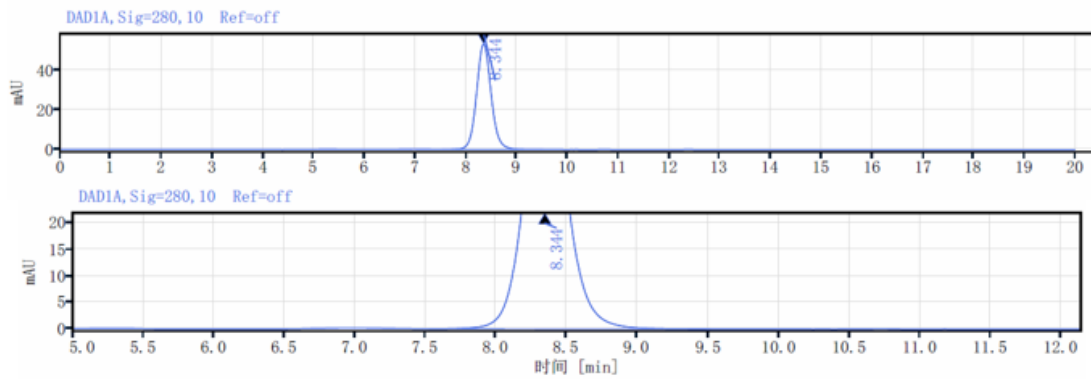
Data Examples

SDS-PAGE



On SDS-PAGE under reducing (R)/non-reducing(N-R) condition. The gel was stained overnight with Coomassie Blue. The purity of the protein is greater than 95%.

SEC-HPLC



The purity of this product is more than 95% verified by SEC-HPLC